

# Coralville Lake Lake Macbride

■ 2015 VISITORS GUIDE ■

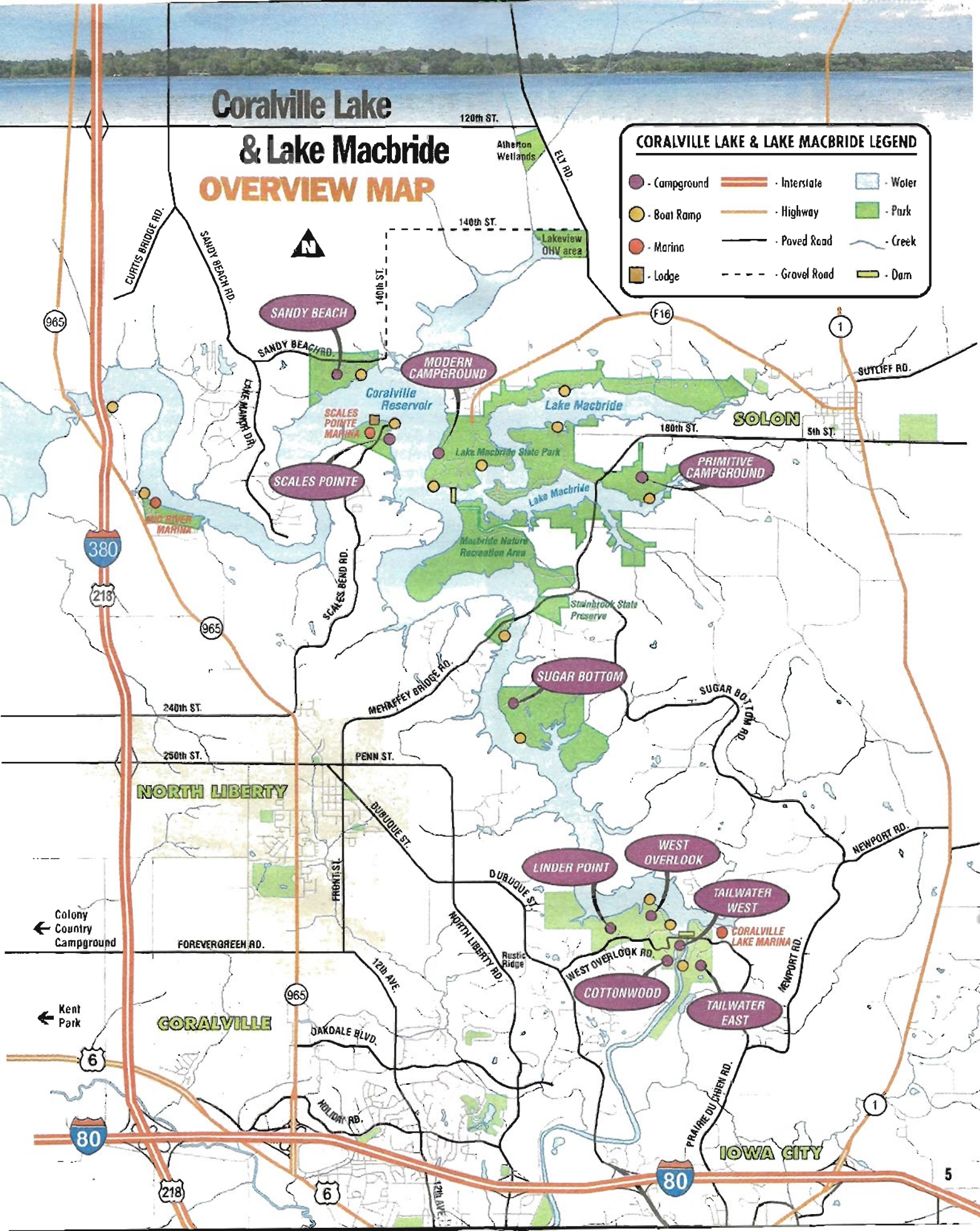
- MAPS ■ FOOD ■
- RENTALS ■ EVENTS ■
- SUPPLIES ■
- ACTIVITIES ■

# Coralville Lake & Lake Macbride

## OVERVIEW MAP

**CORALVILLE LAKE & LAKE MACBRIDE LEGEND**

- Campground	- Interstate	- Water
- Boat Ramp	- Highway	- Park
- Marina	- Paved Road	- Creek
- Lodge	- Gravel Road	- Dam



# Camping

## At Coralville Lake

The Dam Complex is made up of five campgrounds: West Overlook, Linder Point, Cottonwood, Tailwater East and Tailwater West.

Tailwater East and Tailwater West are located below the dam along the Iowa River. The Tailwater West campground has 20 campsites complete with concrete pads. Some sites have full hook-ups — water, electric and sewer. Other sites only have water and electrical hookups. The tent-only sites are consolidated at the north end of the area.

Sugar Bottom and Sandy Beach campgrounds are located upstream from the Dam on the 23-mile long lake.

Campers can choose from non-electric, walk-in tent sites to full-service sites. All campsites have a picnic table and fire ring. Sites suitable for RVs have a gravel or concrete camp pad. All campgrounds offer modern restrooms and showers, a sanitary dump station and at least one fish cleaning station. Many have boat launch facilities and a beach. Fees range from \$14 to \$26.

For more information on Coralville Lake campgrounds, go online to [www.coralvillelake.org](http://www.coralvillelake.org) or call (319) 338-3543, ext. 6300.

**CHECK-IN: 6 p.m. • CHECK-OUT: 5 p.m. • QUIET HOURS: 10 p.m. to 6 a.m.**

### 2015 CORALVILLE LAKE CAMPING FEES

SITE TYPE	FEE
Tent, non-electric	\$14
RV, non-electric	\$16
30 Amp electric	\$20
50 Amp electric	\$22
30 Amp, water/sewer	\$24
50 Amp, water only	\$24
50 Amp, water/sewer	\$26

### MORE RESERVABLE CAMPSITES IN 2016:

Starting next year, customers will be able to reserve an additional 89 campsites through the National Recreation Reservation Service. The only sites that will remain available on a first-come, first-served basis will be the sites that are subject to flooding.

## At Lake Macbride

Lake Macbride's modern campground features a shower/restroom facility, back-in site pads complete with 20 to 50 amp electrical service, picnic tables and fire rings. Eleven sites have full hook-ups, and an additional 17 sites have hydrants for potable water. From May 1 to Sept. 30, full hook-up sites are \$19 and all other sites are \$16. After this time, prices are reduced to \$14 and \$11, respectively. 75 percent of these sites are reservable.

The primitive campground in the southern portion of the park has 57 campsites, and both flush and non-flush restrooms. This campground is situated in a shaded/semi-timbered area near the lake. During the recreational season, all sites are \$9. After this time, all sites are \$6. You may reserve a site in either campground by calling 1-(877) 427-2757 or going online to [www.iowadnr.gov](http://www.iowadnr.gov). Walk-in camping is also available, and permits can be obtained by self-registering for a non-reservable site at the entrance of the campground.

**CHECK-IN TIME: 4 p.m. • CHECK-OUT TIME: 3 p.m.**  
**QUIET HOURS: 10 p.m. to 6 a.m.**



## At Macbride Nature Recreation Area

At the Macbride Nature Recreation Area, there are two areas designated for camping. The primitive group campsites, Wolf sites 1-5, can accommodate 10 to 20 people for \$20 per night. The Fox sites 1-8 are individual campsites available for \$10 per night. Campsites may be reserved in advance at the Field House Membership Desk on the UI campus in Iowa City. Sites that are not reserved, other than Bluestem Campsite & Social Center, are

available on a first-come, first-served basis. For more information, call (319) 335-9847 or go online to <http://recserv.uiowa.edu/Apps/Facilities/MacbrideNatureRecreationArea.aspx>

### Macbride Nature Recreation Area Hours:

April 1 to Oct. 31: 6 a.m. to 9 p.m.  
Nov. 1 to March 31: 9 a.m. to 6 p.m.

To Solon, Hwy 1 via CR / F16

County Road W4F / Sandy Beach Road

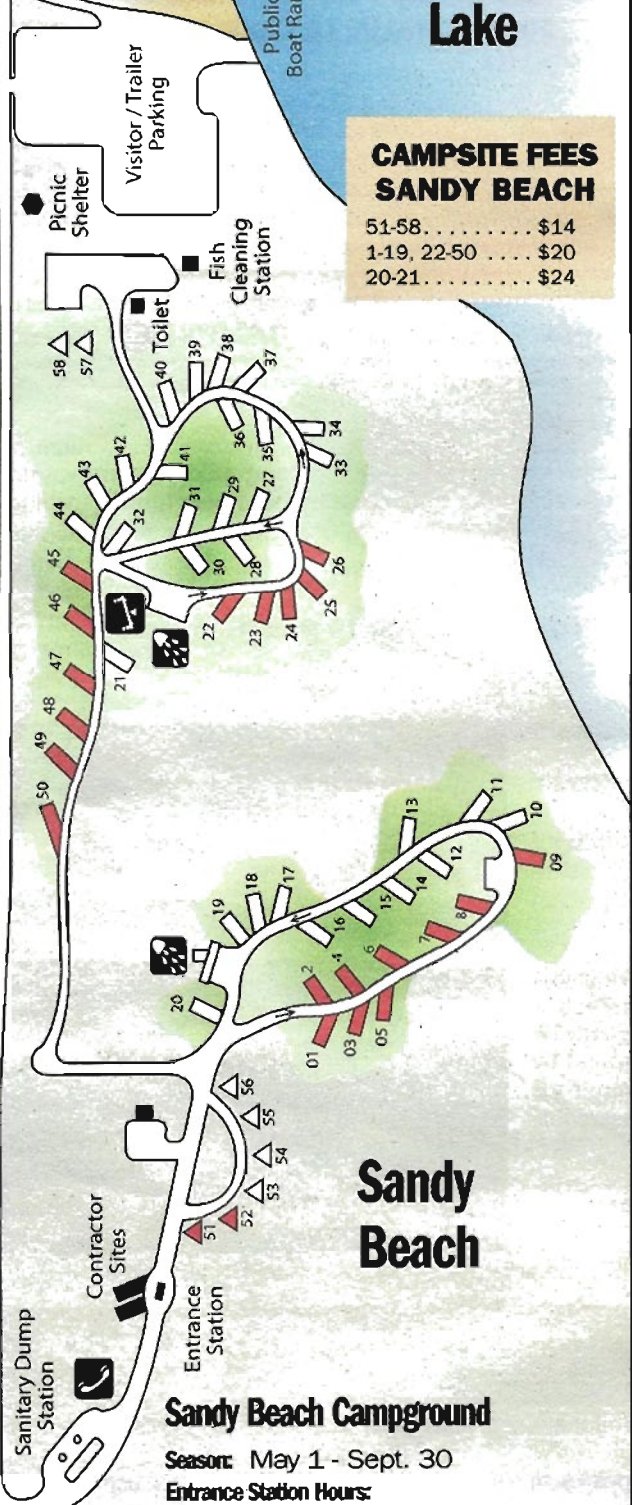
← To Shueyville, I-380 / Hwy 218, Hwy 965

- Day Use Area
- Toilet
- Change House
- Beach

## Coralville Lake

### CAMPSITE FEES SANDY BEACH

51-58.....	\$14
1-19, 22-50 .....	\$20
20-21.....	\$24



## Sandy Beach

### Sandy Beach Campground

**Season:** May 1 - Sept. 30  
**Entrance Station Hours:**  
 Sat-Wed: 4 to 8 p.m.  
 Thu-Fri: 4 to 9 p.m.

**GPS Coordinates:**  
 41.81361 -91.59528

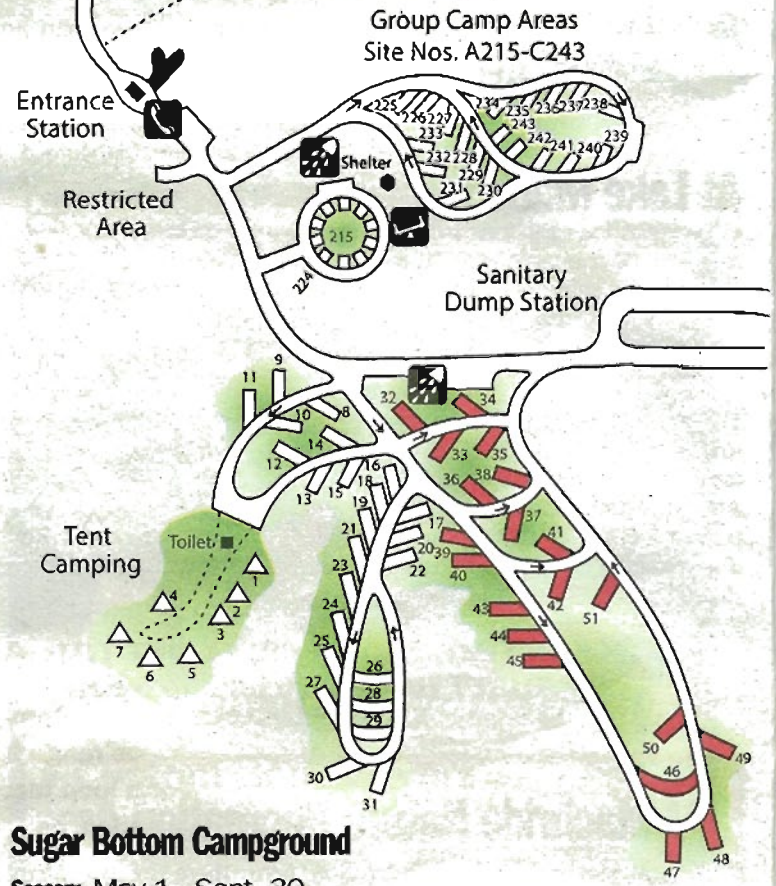


### CAMPSITE FEES - SUGAR BOTTOM

1-7, 95-104 .....	\$14
8-51, 69-94, 105-190 .....	\$20
Group loops A, B & C per site .....	\$20
(see Group Camping info below)	
192-214.....	\$22
52-63.....	\$24
191,300-311 .....	\$26

First-come, first-served campsites

## Sugar Bottom



Group Camp Areas  
 Site Nos. A215-C243

### Sugar Bottom Campground

**Season:** May 1 - Sept. 30  
**Entrance Station Hours:**  
 Mon-Wed: 9 to 11 a.m., 3 to 9 p.m.  
 Thu-Sat: 9 to 11 a.m., 3 to 10 p.m.  
 Sun: noon to 8 p.m.

**GPS Coordinates:**  
 41.75639 -91.55917



## Group Camping

The Sugar Bottom Group Camp Area has four loops, A, B1, B2 and C. Individual group loops range from 4 to 10 sites. Large groups may reserve more than one group loop for a maximum of 29 campsites. To make a group campground reservation, call 1-(877) 444-6777 or [www.recreation.gov](http://www.recreation.gov)

### Group Loop A

Reserving site A215 includes the remaining sites in Group Loop A, A216-A224, for a total of 10 sites. The fee is \$200 per night.

### Group Loop B1

Reserving site B225 includes the sites in Group Loop B1, B226-B228, for a total of four sites. The fee is \$80 per night.

### Group Loop B2

Reserving site B229 includes the sites in Group Loop B2, B230-B233, for a total of five sites. The fee is \$100 per night.

### Group Loop C

Reserving site C234 includes the sites in Group Loop C, C235-C243, for a total of 10 campsites. The fee is \$200 per night.

## CAMPSITE FEES - DAM COMPLEX

COTTONWOOD	TAILWATER EAST
C1-C15.....\$14	E1-E5.....\$14
LINDER POINT	E6-E19, E25-E28.....\$20
L13-L16.....\$16	E20-E24.....\$22
L9-L12, L17-L18.....\$20	TAILWATER WEST
L1-L8.....\$26	T21-T22.....\$14
WEST OVERLOOK	T1-T2, T4, T6, T8-T12, T14- T15, T17.....\$24
W1 - W89.....\$20	T3, T5, T7, T13, T16, T18- T20.....\$26



First-come, first-served campsites

### Linder Point (L1-L18)

**West Overlook Day Use**  
Season: May 5 - Sept. 30  
Entrance Station Hours:  
Daily 10 a.m. to 6 p.m.

**Campsite Reservations**  
Call ReserveAmerica:  
1-(877) 444-6777  
TDD: 1-(877) 833-6777  
Online: [www.recreation.gov](http://www.recreation.gov)

### Dam Complex Campgrounds

Season: April 15 - Oct. 15  
Entrance Station Hours:  
Mon-Wed: 9 to 11 a.m., 3 to 9 p.m.  
Thu-Sat: 9 to 11 a.m., 3 to 10 p.m.  
Sun: noon to 8 p.m.

### GPS Campground Coordinates:

Under Point: 41.725633 -91.540997  
West Overlook: 41.726325 -91.535167  
Cottonwood: 41.722775 -91.435719  
Tailwater East: 41.720897 -91.527817  
Tailwater West: 41.722472 -91.529536

## Devonian Fossil Gorge

The Floods of 1993 uncovered a hidden treasure near Coralville Lake, the Devonian Fossil Gorge, located south west of the dam spillway. In 2008, floodwaters struck again, exposing even more new discoveries.

Check out the markers and interpretive panels that have been installed, as well as a brochure that explains the fossils you'll see.

A fascinating spot is #9, the Cave Collapse. Geologists have determined that a section of colonial corals from the overlying biostrome collapsed into a cave and were then "cemented" to the cave floor. Erosion has revealed the cave and exposed the fossils and cave walls.